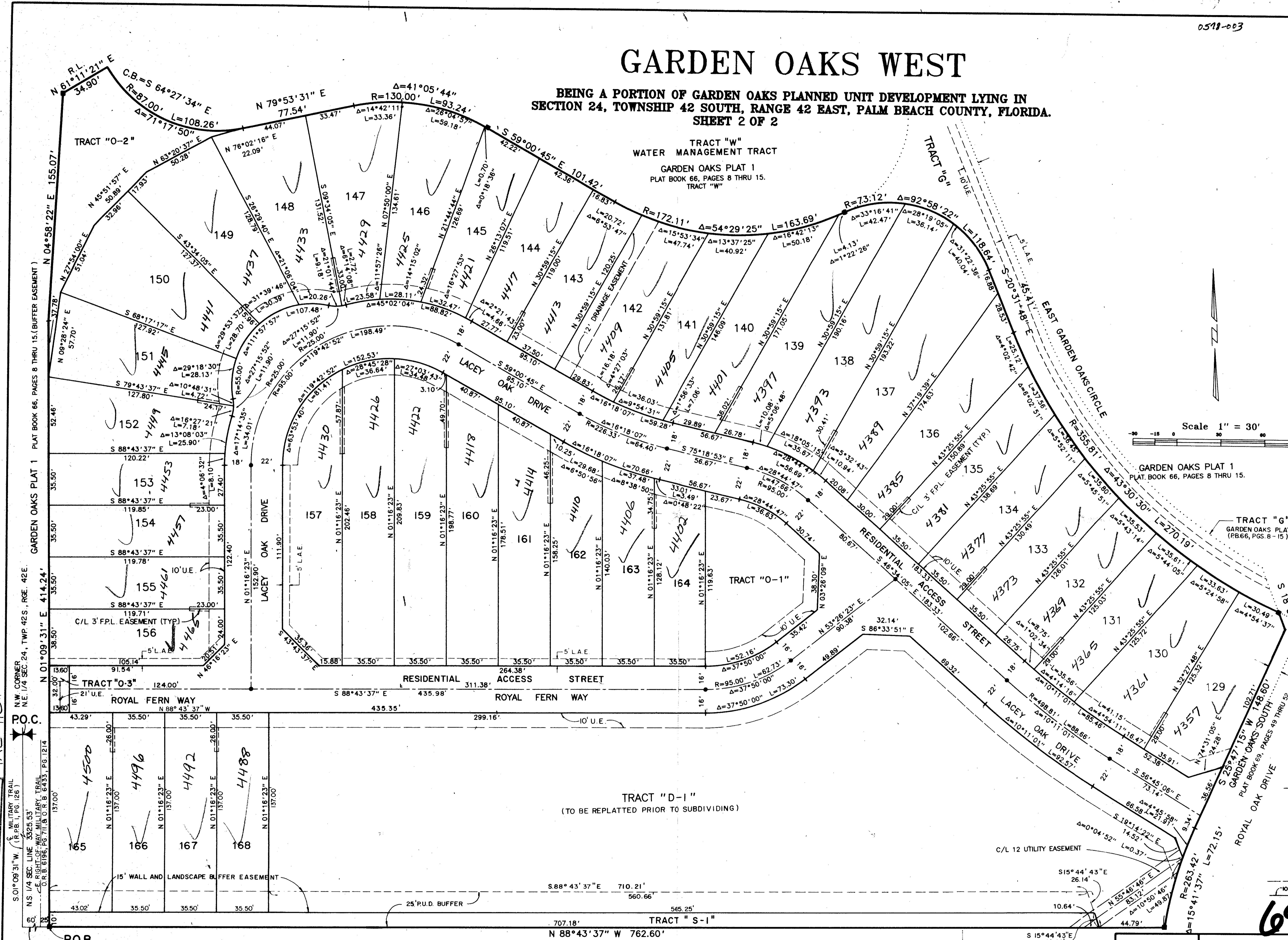


# GARDEN OAKS WEST

BEING A PORTION OF GARDEN OAKS PLANNED UNIT DEVELOPMENT LYING IN SECTION 24, TOWNSHIP 42 SOUTH, RANGE 42 EAST, PALM BEACH COUNTY, FLORIDA. SHEET 2 OF 2

STATE OF FLORIDA  
COUNTY OF PALM BEACH  
This Plat was filed for record at \_\_\_\_\_  
M. this \_\_\_\_\_ day of \_\_\_\_\_, 19\_\_\_\_  
and duly recorded in Plat Book No. \_\_\_\_\_  
on Page \_\_\_\_\_  
Milton T. Bauer, Clerk of the Circuit Court  
By \_\_\_\_\_ D.C.

TRACT "W"  
WATER MANAGEMENT TRACT  
GARDEN OAKS PLAT 1  
PLAT BOOK 66, PAGES 8 THRU 15.  
TRACT "W"



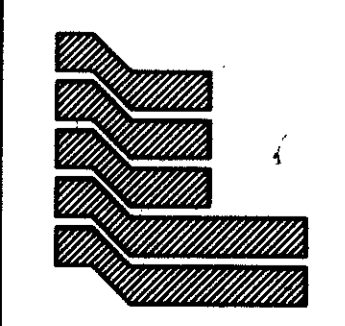
**IMPACT FEE**  
**PET. 89-15A**  
**COLLECT**

TAZ = 110

FLOOD ZONE B  
FLOOD MAP # 130B  
ZONING RM  
SE 89-15  
PIND NAME JAVIC  
244212

GROVE PARK ELEMENTARY SCHOOL  
(NOT PLATTED)

0518-003



Landmark Surveying & Mapping Inc.  
1850 FOREST HILL BOULEVARD  
PH. (407)433-5405 SUITE 100 W.P.B. FLORIDA

GARDEN OAKS WEST

69/133